


MAINTENANCE

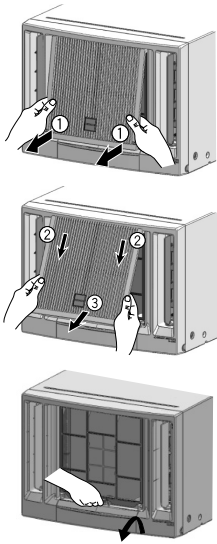
 **CAUTION**


Always turn off and unplug the unit before any cleaning or maintenance to ensure safety.

PRE-FILTER

If the pre-filter is clogged with dust, the air flow volume will be decreased and resulting in poor cooling performance, and increased operating noise. Be sure to clean the filter about every 20 days.

- ① Remove the suction grille by pulling the bottom corner and slightly lift up the suction grille.
- ② - ③ Pull downward to unhook the suction grille and remove the suction grille.
- Lift and unhook the bottom of the pre-filter and remove it.
 - Remove dust from the pre-filter by using a vacuum cleaner. If the pre-filter is very dirty, wash it with detergent and rinse properly with water. Dry the pre-filter with soft cloth and do not expose it to heat or under direct sunlight.
 - Install the pre-filter by fitting the top hooks and then hook the bottom of the pre-filter.
 - Attach the suction grille back to its place by hooking at the top side to the front cover, then gently push at bottom corner.



 **CAUTION**

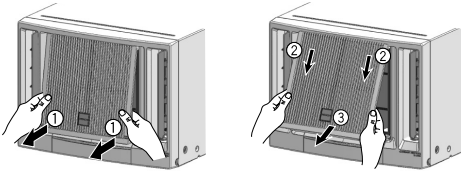
- Do not use hot water above 40°C for cleaning the pre-filter.
- Do not operate the air conditioner without the pre-filter.


FRONT COVER AND SUCTION GRILLE

Clean the front cover and suction grille with a soft dry cloth. When it is excessively dirty, wipe it with a soft cloth dampened with mild soap, then wipe it again thoroughly with a soft dry cloth.

The suction grille can also be removed and be washed with water and mild soap. Remove the suction grille in the following manner.

- ① Remove the suction grille by pulling the bottom corner and slightly lift up the suction grille .
- ② - ③ Pull downward to unhook the suction grille and remove the suction grille.




 **CAUTIONS**

Never use hot water above 50°C, erosive chemicals or brush to clean the front cover and suction grille because they will damage the plastic surface.

BEFORE ASKING FOR SERVICE

Check the following items before asking for service. If the malfunction persists, please contact service centre.

Symptom	Check
Does not operate at all	<div>① Is the power cord loosened or unplugged?</div> <div>② Is the fuse blown out or the circuit breaker tripped?</div> <div>③ Is the voltage normal?</div> <div>④ Is the main switch set to “OFF” position?</div>
Poor cooling performance	<div>① Is the pre-filter covered with heavy dust? Clean pre-filter and replace it.</div> <div>② Is the temperature setting correctly?</div> <div>③ Is the sunlight fall directly in the air conditioner?</div> <div>④ Is the air flow on the rear side (outdoor) blocked? Leave a space of 900 mm (3 feet) behind the rear side of air conditioner.</div> <div>⑤ The doors or windows may be opened widely or there are other sources of heat in the room.</div> <div>⑥ Is the ventilation damper opened?</div>

 **CAUTION**

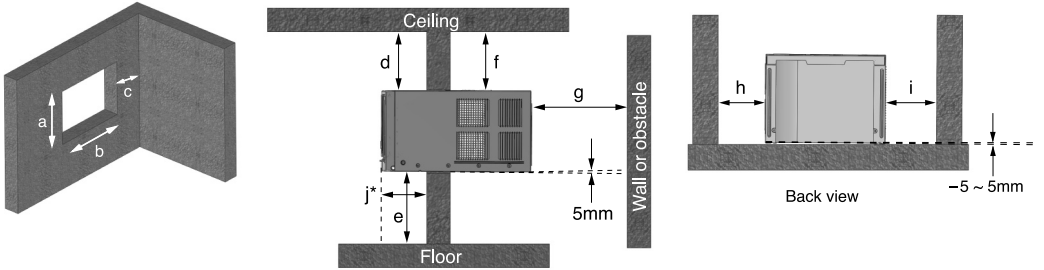
If the power supply cord is damaged, it must be replaced by the manufacturer, its service agent or similiarly qualified persons in order to avoid a hazard.

INSTALLATION INSTRUCTIONS

Remove all the shipping parts before installation and consult an authorised dealer concerning installation requirements, otherwise may damage the air conditioner.


LOCATION

- Select a location that can support the weight of the air conditioner and will not cause increased operating noise and vibration.
 - Select a location to avoid direct sunlight on the air conditioner.
 - Select a good location for efficient air circulation.
 - Select a location where there is no obstacles near the air inlet and outlet.



Model	Dimension (mm)									
	a	b	c	d	e	f	g	h	i	j*
RA-08QF	365	490	Over 200	Over 100	Over 1200	Over 150	Over 900	Over 200	Over 200	170 or more
RA-10QF										
RA-13QF	395	580	Over 200							170 or more

* Recommended dimension for performance testing purpose only.


 **CAUTIONS**

- The installation material must be corrosion proof, especially the air conditioner is installed near the sea or hot spring.
- Do not install air conditioner in the places where there is a possibility of inflammable gas leaks.
- Secure tightly the cabinet with screws to the frame. Otherwise there may be danger of the air conditioner dropping.
- Please keep the recommended installation dimensions. Otherwise waterdrops or malfunction may occur.

<IA1777: A>

POWER SOURCE

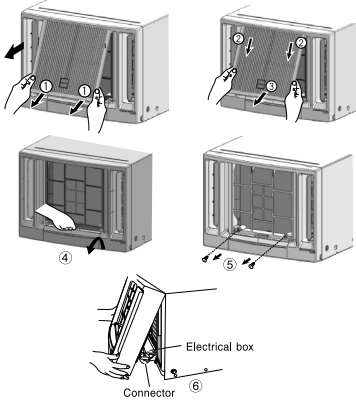
- Check the capacity of wiring and power outlet. The power outlet should be used exclusively for the air conditioner. Do not use it with other appliances. Any wiring must follow the national wiring regulation.
 - Ground the air conditioner to prevent danger of electric shock.
 - Connect the air conditioner with power source securely.
 - Use a fuse as below:

RA-08QF RA-10QF RA-13QF	15A Circuit Breaker	Voltage rating Operatable Voltage range	50Hz 220V 50Hz 198-242V	 CAUTION This appliance must be earth
-------------------------------	---------------------------	---	----------------------------	--

REMOVE THE FRONT COVER

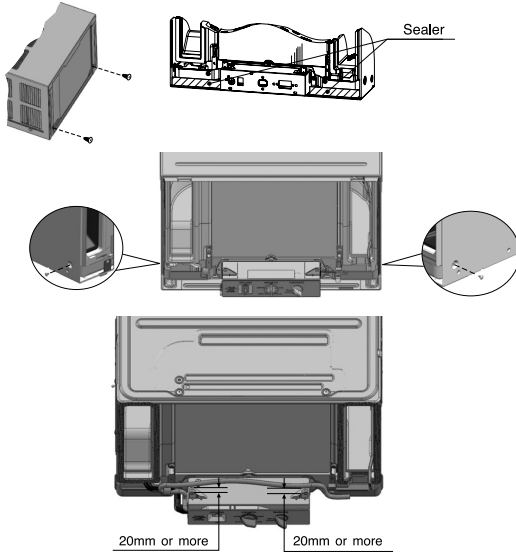
Remove the front cover in the following manner.

- ① Remove the suction grille by pulling the bottom corner and slightly lift up the suction grille.
- ② - ③ Pull downward to unhook the suction grille and remove the suction grille.
- ④ Lift and unhook the bottom of the pre-filter and remove it.
- ⑤ Remove two screws which secure the front cover.
- ⑥ Remove the front cover from lower side. Disconnect the timing motor connector at right side of the electrical box.



SLIDE OUT OF UNIT

- ① Remove the four screws which fasten the base pan to the cabinet at the side and back.
- ② Remove the stopper at front left side of base. (RA-13QF)
- ③ Slide out the unit by pulling the handles.



After slide in the unit, please install a sealer between the base pan and cabinet to prevent from entering rain water in case of typhoon. Reinstall the stopper at front side of base and fasten the unit to cabinet at the side with the screw, then refit the front cover.

POWER CORD ARRANGEMENT

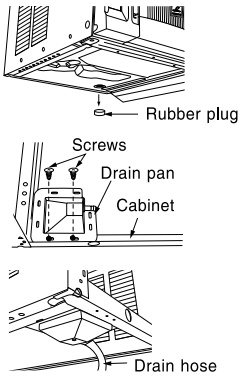
If power cord is withdrawn from left side of unit, please arrange the power cord as in figure after installing the front cover.

DRAIN PAN

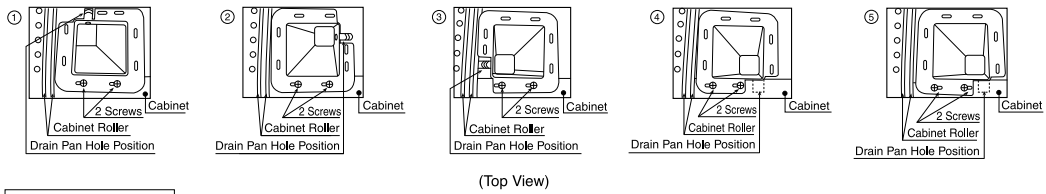
CONDENSED WATER DRAINAGE

This air conditioner use a “turbo fan splashing ring” which is designed to splash the condensated water on the condenser surface for maximum cooling efficiency, thus producing a splashing sound. If you are uncomfortable with the sound, you can install an outside drainage by using the following procedure which may, reduce the cooling operation performance.

- ① Remove the rubber plug from the base pan.
- ② Install the drain pan by using 2 pieces of screws (provided) at the cabinet.
- ③ Connect the drain pan with the drain hose to drain point. (Drain hose or tubing can be purchase locally. Drain hose inner diameter should be around ø13mm or 1/2 inch.)
- ④ Pour 2 glasses of water into the drain pan to ensure the drainage is functioning normal.
- ⑤ Slide the air conditioner unit back into the cabinet.



The Drain Pan can be used in any positions as below and be secured by 2 screws to avoid water dropping problem:



CAUTIONS

Drain Pan edge shall not exceed the cabinet roller.

CAUTION

When using operation of auto swing function, if the vertical deflector swing angle is incomplete, please turn the deflector manually to the utmost left angle. An abnormal sound will occur when adjusting the vertical deflector. This sound indicates that the engagement of gear is in position and does not affect the operation.

When raining, rain water will enter the outdoor side. An abnormal sound will occur during operation of unit in raining conditions and approximately 10 minutes after rain stop. This will not affect the performance or liability of the room air conditioner.

INSTALLATION WORK INSPECTION CHECK LIST

Item No.	Check Item	Confirm
1	Have you removed the shipping parts? Please check the caution sheet which is attached at front cover.	
2	Is the incline of room air conditioner regarding front and rear, right and left all right after installation?	
3	Is the strength of installation sufficient?	
4	Have you grounded the room air conditioner?	
5	Have you fastened the unit to the cabinet?	
6	Have you done a test operation, and are there any abnormal phenomena?	

Recommended temperature range for safety testing should be as below:	
Cold side :	Dry bulb 21 – 32°C Wet bulb 15 – 23°C
Hot side :	Dry bulb 21 – 43°C Wet bulb 15 – 26°C

MEMO

.....

.....

.....