

Instruction Manual

Washing Machine

Front Loading

Model

BD-70CVE
BD-80CVE



Thank you for purchasing a Hitachi front loading washing machine.

- Please read this Instruction Manual carefully for proper operation of the machine.
- Please keep this Instruction Manual for future reference.

HITACHI

Content

Safety Instructions

■ Safety Instructions	2
-----------------------------	---

Installation

■ Product Description	7
■ Installation	8

Operation

■ Quick Start	12
■ Before Each Washing	13
■ Detergent Dispenser	14
■ Control Panel	15
■ Option	16
■ Other Function	17
■ Programs	18
■ Washing Program Table	19

Maintenances

■ Cleaning And Care	21
■ Troubleshooting	24
■ Technical Specifications	25
■ Specification	26

Safety Instructions

Safety Instructions

For your safety, the information in this manual must be followed to minimize the risk of fire or explosion, electric shock, or to prevent property damage, personal injury or loss of life.

Explanation of the symbols:

WARNING

This combination of symbol and signal word indicates a potentially dangerous situation which may result in death or serious injuries unless it's avoided.

CAUTION

This combination of symbol and signal word indicates a potentially dangerous situation which may result in slight or minor injuries or damage to property and the environment.

NOTE

This combination of symbol and signal word indicates a potentially dangerous situation which may result in slight or minor injuries.

WARNING

The electric shock!

- If the supply cord is damaged, it must be replaced by the manufacturer, its service agent or similarly qualified persons in order to avoid a hazard.

Safety Instructions

- This appliance is intended to be used in household and similar applications such as: (IEC 60335-2-7)
 - staff kitchen areas in shops, offices and other working environments;
 - farm houses;
 - by clients in hotels, motels and other residential type environments;
 - bed and breakfast type environments;
 - areas for communal use in blocks of flats or in launderettes.
- Do not dismantle, repair or modify the appliance. This could cause malfunction, fire, electric shock or injury. For repair, please contact your local service center.
- The new hose-sets supplied with the appliance are to be used and that old hose-sets should not be reused.
- Before any maintenance the device, unplug the appliance from the mains.
- Always unplug the machine and turn off the water supply after use.
- Do not pour water on the machine when it is running. This could cause an electric shock.
- To ensure your safety, power plug must be inserted into an earthed three-pole socket. Check carefully and make sure that your socket is properly and reliably earthed.
- Make sure that the water and electrical devices must be connected by a qualified technician in accordance with the manufacturer's instructions and local safety regulations.
- Do not insert the plug with a wet hand.
- Use the rated mains voltage and do not connect another plug at the same socket.
- Do not use a mains plug adaptor or an extension cable.
- This appliance is not intended for use by persons (including children) with reduced physical, sensory or mental capabilities, or lack of experience and knowledge, unless they have been given supervision or instruction concerning use of the appliance by a person responsible for their safety.

Risk to children!

- Children should be supervised to ensure that they do not play with appliance.
- Animals and children may climb into the machine. Check the machine before every operation.

Safety Instructions

- Glass door may be very hot during the operation. Keep kids and pets far away from the machine during the operation.
- Remove all packages and transport bolts before using the appliance. Otherwise, serious damage may result.
- Plug must be accessible after installation.
- The appliance must not be installed behind a lockable door, a sliding door or a door with a hinge on the opposite side to that of the washer dryer.

Risk of explosion!

- Do not wash or dry articles that have been cleaned in, washed in, soaked in, or dabbed with combustible or explosive substances (such as wax, oil, paint, gasoline, degreasers, dry-cleaning solvents, kerosene, etc.) This may result in fire or explosion.
- The washer dryer is not to be used if industrial chemicals have been used for cleaning.
- The lint trap has to be cleaned frequently, if applicable.
- The lint must not be allowed to accumulate around the washer dryer.
- Beforehand thoroughly rinse items of washing by hand.

CAUTION

Installing the product!

- The installation of the appliance should be done by the manufacturer's dealer or service agent.
- This washing machine is for indoor use only.
- It isn't intended to be built-in using.
- The openings must not be obstructed by a carpet.
- Washing machine shall not be installed in bath room or very wet rooms as well as in the rooms with explosive or caustic gases.
- The washing machine with single inlet valve only can be connected to the cold water supply. The product with double inlet valves should be correctly connected to the hot water and cold water supply.
- Plug must be accessible after installation.
- If there is a water outage or you remove the water supply hose and reattach it, turn off the tap and press the Start/Pause button, then turn on the tap slowly after 40 seconds.
Air pressure could damage the washing machine if there is a lot of air in the water pipe.

Safety Instructions

Risk of damaging appliance!

- Your product is only for home use and is only designed for the textiles suitable for machine washing.
- Do not climb up and sit on top cover of the machine.
- Do not lean against machine door.
- Do not put heavy objects on the washing machine.
- Cautions during Handling Machine:

1. Transport bolts shall be reinstalled to the machine by a specialized person.
2. The accumulated water shall be drained out of the machine.
3. Handle the machine carefully. Never hold each protruded part on the machine while lifting. Machine door can not be used as the handle during the conveyance.
4. This appliance is heavy. Transport with care.

- Please do not close the door with excessive forces. If it is found difficult to close the door, please check if the clothes are put in or distributed well.
- It is forbidden to wash carpets.

Operating the appliance!

- Before washing the clothes at first time, the product shall be operated in one round of the whole procedures without the clothes inside.
- Flammable and explosive or toxic solvents are forbidden. Gasoline and alcohol etc. shall not be used as detergents. Please only select the detergents suitable for machine washing, especially for drum.

Safety Instructions

- Do not wash waterproof items such as raincoats, wet suits, ski suits, sleeping bags, cushions, pillows, shoes, etc. The washing machine may not work properly, or the items may cause injury or damage the machine.
- If detergent, fabric softener or bleach spills on the surface of the machine, clean it up with a damp cloth immediately. The plastic or steel parts of the washing machine may get damaged.
- Do not place heat sources near the washing machine. This may cause deformation of the machine.
- Make sure that all pockets are emptied. Sharp and rigid items such as coin, brooch, nail, screw or stone etc. may cause serious damages to this machine.
- Please check whether the water inside the drum has been drained before opening its door. Please do not open the door if there is any water visible.
- Be careful of burning when the product drains hot washing water.
- Never refill the water by hand during washing.
- After the program is completed, please wait for two minutes to open the door.
- Adequate ventilation has to be provided to avoid the back flow of gases into the room from appliances burning other fuels, including open fires.
- Fabric softeners, or similar products, should be used as specified by the fabric softener instructions.
- Remove all objects from pockets such as lighters and matches before use the appliance.
- **WARNING:** The appliance must not be supplied through an external switching device, such as a timer, or connected to a circuit that is regularly switched on and off by a utility.

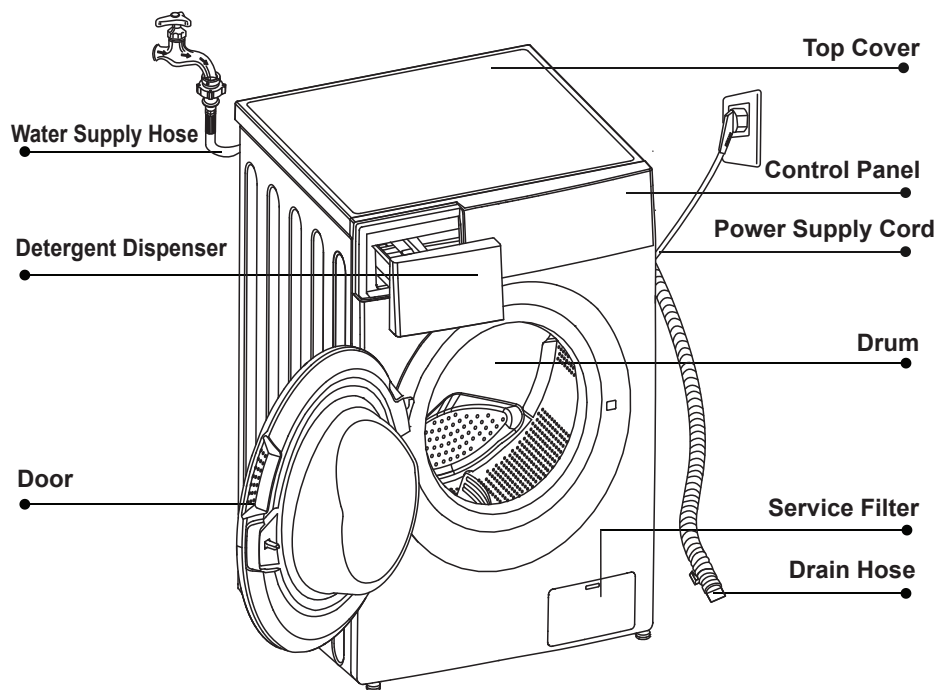
Packaging/Old appliance



This marking indicates that this product should not be disposed with other household wastes throughout the EU. To prevent possible harm to the environment or human health from uncontrolled waste disposal, recycle it responsibly to promote the sustainable reuse of material resources. To return your used device, please use the collection systems or contact the retailer where the product was purchased. They return and can take this product for environmental safe recycling.

Installation





Product Description



NOTE

The product line chart is for reference only, please refer to real product as standard.

Accessories

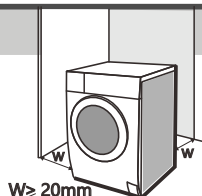
 <p>Cover Caps (4pcs.)</p>	 <p>Supply Hose</p>	 <p>Drain Hose Support ※Optional</p>	 <p>Instruction Manual</p>
---	--	---	---

Installation

Installation area

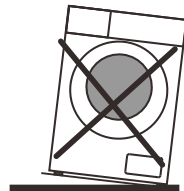
WARNING

- Stability is important to prevent the product from wandering!
- Make sure that the product should not stand on the power cord.



Before installing the machine, the location characterized follows shall be selected:

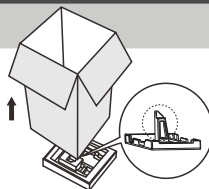
1. Rigid, dry, and level surface
2. Avoid direct sunlight
3. Sufficient ventilation
4. Room temperature is above 0°C
5. Keep far away from the heat resources such as coal or gas.



Unpacking the washing machine

WARNING

- Packaging material (e.g. Films, Styrofoam) can be dangerous for children.
- There is a risk of suffocation ! Keep all packaging well away from children.



1. Remove the cardboard box and styrofoam packing.
2. Lift the washing machine and remove the base packing. Make sure the small triangle foam is removed with the bottom one together. If not, lay the unit down with side surface, then remove the small foam from the unit bottom manually.
3. Remove the tape securing the power supply cord and drain hose.
4. Remove the inlet hose from the drum.

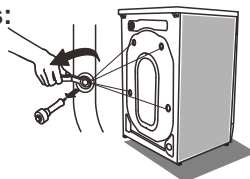
Remove transport bolts

WARNING

- You must remove the transport bolts from the backside before using the product.
- You'll need the transport bolts again if you move the product, so make sure keep them in a safe place.

Please take the following steps to remove the bolts:

1. Loosen 4 bolts with spanner and then remove them.
2. Stop the holes with Cover Caps.
3. Keep the transport bolts properly for future use.



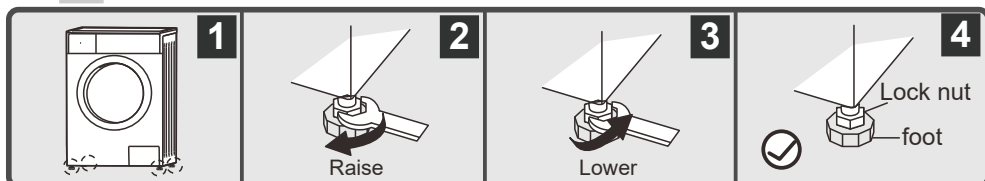
Installation

Leveling the washing machine

WARNING

- The lock nuts on all four feet must be screwed tightly against the housing.
- Check the alignment of the washing machine with level, and adjust the feet if it's aligned.

1. Check if the legs are closely attached to the cabinet. If not, please turn them to their original positions tighten the nuts.
2. Loosen the lock nut turn the feet until it closely contacts with the floor.
3. Adjust the legs and lock them with a spanner, make sure the machine is steady.



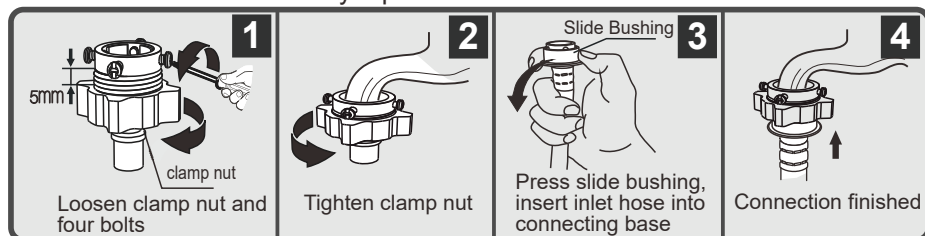
Connect Water Supply Hose

WARNING

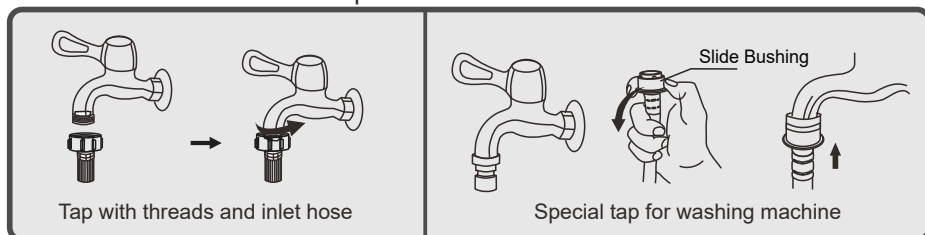
- To prevent leakage or water damage, follow the instructions in this chapter.
- Do not kink, crush, modify or sever water inlet hose.
- For the model equips hot valve, connect it to hot water tap with hot water supply hose. Energy consumption will decrease automatically for some program.

Connect the inlet pipe as indicated. There are two ways to connect the inlet pipe.

1 Connection between ordinary tap and inlet hose.

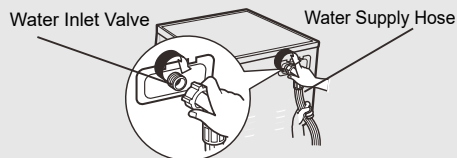


2 Connection between screw tap and inlet hose.



Installation

- Connect the other end of inlet pipe to the inlet valve at the backside of product and fasten the pipe tightly clockwise.
- Optimum water pressure is 0.05~1.0MPa.



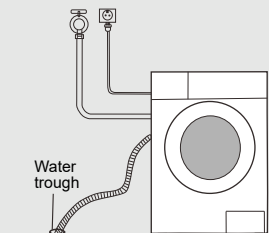
Drain Hose

⚠ WARNING

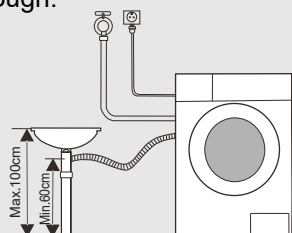
- Do not kink or protract the drain hose.
- Position drain hose properly, otherwise damage might result of water leakage.

There are two ways to place the end of drain hose:

1. Put it into the water trough.

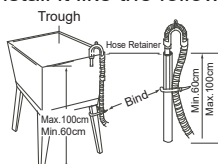
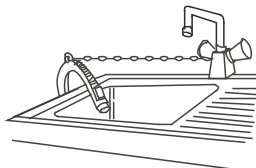


2. Connect it to the branch drain pipe of the trough.



NOTE

- If the machine has drain hose support, please install it like the following.



⚠ WARNING

- When installing drain hose, fix it properly with a rope.
- If drain hose is too long, do not force it into washing machine as it will cause abnormal noises.

Installation

Checking operation

Checking after installation

1	Turn on the water tap and close the washing machine door.
2	Press the Power button to switch power on.
3	Select the cotton program and press the Start/Pause button.
4	After 5 minutes, check if there is no water leakage from anywhere.
5	Press the Power button to switch power off.
6	Press the Power button again to switch power on.
7	Select the Spin program and press the Start/Pause button.
8	Check if there is no abnormal vibration or sound, and that water is drained out properly.

If any of the following conditions or other abnormalities occur, immediately pull out the power plug to prevent an accident and contact your local service center.

- **The washing machine does not operate when you switch power on.**
- **The power cord has cracks.**
- **There are abnormal vibrations and sounds during operation.**
- **There is a smell of burning.**

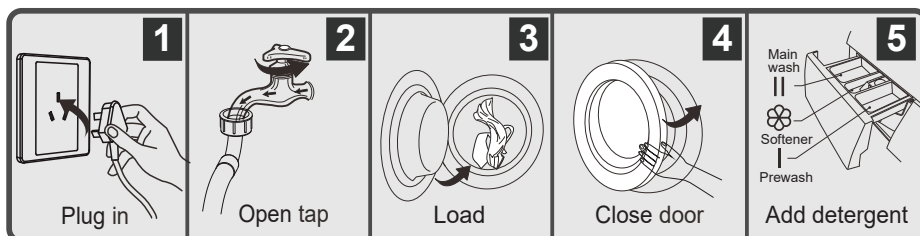
Operations

Quick Start

⚠ CAUTION

- Before washing, please make sure it's installed properly.
- Before washing at first time, the washing machine shall be operated in one of the whole procedures without clothes in as follows.

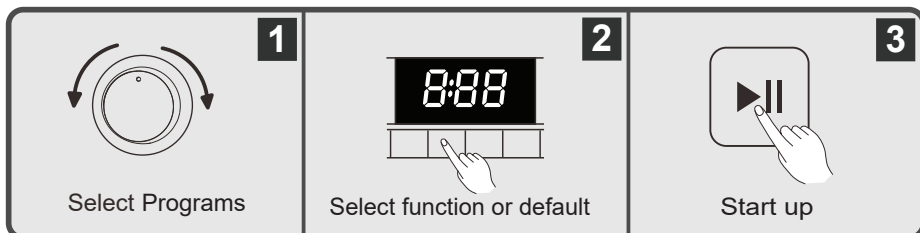
1 Before Washing



NOTE

- Detergent need to be added in "case I" after selecting pre-washing for machines with this function.

2 Washing



NOTE

- If default is selected, step 2 can be skipped.

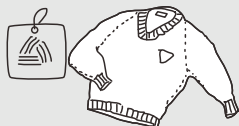
3 After Washing

"End" on display.

Operations

Before Each Washing

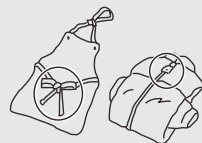
- The working condition of the washer should be 0-40°C. If used under 0°C, the inlet valve and draining system may be damaged. If the machine is placed under condition of 0°C or less, then it should be transferred to normal ambient temperature to ensure the water supply hose and drain hose are not frozen before use.
- Please check the labels and the explanation of using detergent before wash. Use non-foaming or less-foaming detergent suitable for machine washing properly.



Check the label



Take out the items out of the pockets



Knot the long strips, zip or button



Put small clothes into the washing net



Turn easy-pilling and long-pile fabric inside out



Separate clothes with different textures

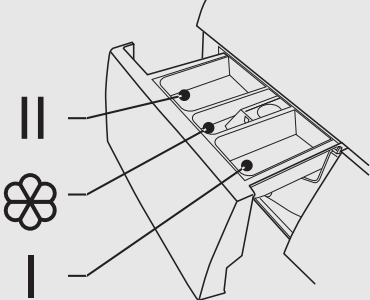
WARNING

- When washing a single clothes, it may easily cause great eccentricity. Therefore it is suggested to add one or two more clothes to be washed together so that spinning can be done smoothly.
- Don't washing the clothes touching with kerosene, gasoline, alcohol and other flammable materials.
- Washing the following items may cause injury or malfunction due to abnormal vibration.
 - Waterproof items such as a wet suit, ski suit, etc.
 - Anti-slip treated items with rubber bottoms such a doormat.
 - Cushions, pillows, shoes, etc.
 - Do not put the fabric which can absorb the water very well (towel, jeans, etc.) in the washing net when washing.

Operations

Detergent Dispenser

- I Pre wash detergent
- II Main wash detergent
- ✿ Softener



⚠ CAUTION

- Detergent only need to be added in “case I” after selecting pre-washing.
- Use the amount of detergent recommended on the detergent package.
The type and amount of detergent depends on the type of fabric, load size, degree of soiling and hardness of the water used.
Use less detergent if : You wash a small load and the laundry is slightly soiled.
- Too much detergent can result in excess foam formation which reduces rinse efficiency or may cause a water leak.

Programs	I	II	✿	Programs	I	II	✿
Cotton Eco		●	○	Wool		●	○
Cotton	○	●	○	Delicate		●	○
Rapid 15		●	○	Mix	○	●	○
Daily 45		●	○	Outdoor	○	●	○
Daily 60		●	○	Baby Care	○	●	○
Rinse&Spin			○	Synthetic	○	●	○
Spin				Tub Clean			
Duvet		●					

● Means must ○ Means optional

NOTE

- As for the agglomerated or ropy detergent or additive, before they are poured into the detergent box, it is suggested to use some water for dilution to prevent the inlet of detergent box from being blocked and overflowing while filling water.
- Please choose suitable type of detergent for the various washing temperature to get the best washing performance with less water and energy consumption.

Operations

Control Panel

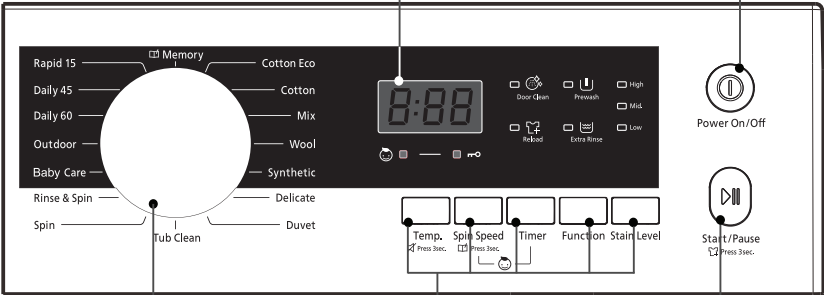
Model: BD-70CVE /BD-80CVE

5

Display
The display shows the settings, estimated time remaining, options, and status messages for your washer. The display will remain on through the cycle.

1

Power
Product is on/off.



4

Programs
Available according to the laundry type.

3

Option
This allows you to select an additional function and will light when selected.

2

Start/Pause
Press the button to start or pause the washing cycle.

NOTE

- The chart is for reference only, please refer to real product as standard.

Display

A

B

C

D

E

The diagram shows the display area with callouts:

- A:** Points to the digital display.
- B:** Points to the Child Lock button.
- C:** Points to the Door Clean button.
- D:** Points to the Reload button.
- E:** Points to the Door Lock button.

A Display

Wash Time (h:min)
1:25
Speed (r/m)
10-
End
End

Delay Time
2h
Error
E30
Temp. (°C)
30

B Child Lock

C Door Clean

D Reload

E Door Lock

*For spin speed above 1,000 (r/m), display shows first two digits.

15

Operations

Option



Prewash

Pre Wash: Press the Function button to choose

The Prewash function can get an extra wash before main wash, it is suitable for washing the dust rises to surface of the clothes; You need to put detergent into the Case (I) when select it.



Extra Rinse

Extra Rinse: Press the Function button to choose

The laundry will undergo extra rinse once after you select it.

Timer

Timer: Set the Timer function

1. Select a programme
2. Press the Timer button to choose the time (the delaying time is 0-24 H.);
3. Press [Start/Pause] to commence the delay operation



Cancel the Timer function

Press the [Timer] button and [Start/Pause] button until the display be 0h. It should be pressed before starting the programme. If the programme already started, should switch off programme to reset a new one.

Stain Level

Stain Level

The washing time will increase or decrease after you select it.

CAUTION

- If there is any break in the power supply while the machine is operating, a special memory stores the selected programme and when the power is restarted, the program will continue.

Programme	Option			Programme	Option		
	Timer	Extra rinse	Pre wash		Timer	Extra rinse	Pre wash
Cotton Eco	○			Tub Clean	○		
Cotton	○	○	○	Wool	○	○	
Rapid 15	○			Delicate	○	○	
Daily 45	○			Mix	○	○	○
Daily 60	○	○		Outdoor	○	○	○
Rinse&Spin	○			Baby Care	○		○
Spin	○			Synthetic	○	○	○
Duvet	○	○					

○ Means optional

Operations

Other Function

Temp

Temp: Press the Temp button to choose
Press the button to regulate the temperature (Cold, 20°C, 30°C, 40°C, 60°C, 90°C)

Spin Speed

Spin Speed: Press the Spin Speed button to choose
Press the button to change the speed.
1200: 0-400-600-800-1000-1200

Programme	Default Speed(r/m)	Programme	Default Speed(r/m)
	1200		1200
Cotton Eco	800	Tub Clean	400
Cotton	1200	Wool	400
Rapid 15	800	Delicate	600
Daily 45	800	Mix	1000
Daily 60	1000	Outdoor	800
Rinse&Spin	1000	Baby Care	1000
Spin	1000	Synthetic	1200
Duvet	800		

*For spin speed above 1,000 (r/m), display shows first two digits.

Child Lock: To avoid misoperation by children.

Choose the Programme

Start

Timer

Spin Speed

Press [Delay] and [Speed]

CAUTION

- Press the two button 3 sec. also to be released the function.
- The "Child Lock" will lock all buttons except Power button.
- Cut off the power supply, the kid's protection is to be released.
- The child lock will remain effective when the power is resumed for some models.

Mute the buzzer :

Choose the Programme

Temp.

Press the [Temp.] button for 3sec., the buzzer is mute.

To act the buzzer function, press the button again for 3 seconds. The setting will be kept until the next reset.

CAUTION

- After muting the buzzer function, the sounds will not be activated any more.

Memory

Memory: To memory the frequently used programs.
After choosing the program and setting the options, press [Spin Speed] 3 sec. before start to wash. The default setting course is Cotton Eco.

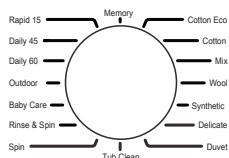
Door Clean: The shower inlet to door glass before final spin process and before opration.

Reload: You can add fabric when your press [Start/Pause] button for 3sec. Before the water high level and the temperature up to 60°C.

Operations

Programs

Programs are available according to the laundry type.



Cotton	For daily washing of cotton and linen items such as shirts, towels, bed linen and table linen.
Synthetic	Wash synthetic articles, for example: shirts, coats, blending. While washing the knitting textiles, detergent quantity shall be reduced due to its loose string construction and easily forming bubbles.
Baby Care	Washing the baby's clothes, it can make the baby's wear cleaner and make the rinse performance better to protect the baby skin.
Daily 45	For washing light soiled items in just 45 minutes.
Mix	Mixed load consisting of textiles made of cotton and synthetics.
Daily 60	It is suitable for washing few and not very dirty clothes quickly.
Outdoor	Specially for outdoor clothes.
Rapid 15	Extra short program approx, suitable for lightly soiled washing as a small amounts of laundry.
Wool	Hand or machine - washable wool or rich wool textiles. Especially gentle wash program to prevent shrinkage, longer program pauses (textiles rest in wash liquor).
Spin	Extra spin with selectable spin speed.
Cotton Eco	For cotton and linen items. Eco operation that saves energy and water that provides the same washing performance as the Cotton program.
Tub Clean	Specially set in this machine to clean the drum and tube. It applies 90°C high temperature sterilization to make the clothes washing more green. When this programme is performed, the clothes or other washing cannot be added. When proper amount of chlorine bleaching agent is put in, the barrel cleaning effect will be better. The customer can use this programme regularly according to the need.
Duvet	This program is specially designed for washing duvet coats.
Delicate	For delicate washable, e.g. made of silk, satin, underwear, synthetic fibres or blended fabrics.

Operations

Washing Programs Table

Model: BD-70CVE /BD-80CVE

Programs	Load(kg)		Temp.(°C)	Default Time	
	7.0	8.0		7.0	8.0
Cotton Eco	7.0	8.0	30	0:58	
Cotton	7.0	8.0	40	2:40	
Rapid 15	2.0	2.0	Cold	0:15	
Daily 45	2.0	2.0	Cold	0:45	
Daily 60	2.0	2.0	Cold	1:00	
Rinse & Spin	7.0	8.0	-	0:31	
Spin	7.0	8.0	-	0:12	
Tub Clean	-	-	90	1:21	
Wool	2.0	2.0	40	1:06	
Delicate	2.5	2.5	30	1:00	
Mix	7.0	8.0	40	1:13	
Outdoor	3.5	4.0	40	1:23	
Baby Care	7.0	8.0	30	1:20	
Synthetic	3.5	4.0	40	2:20	
Duvet	2.5	2.5	40	1:20	

- **The EU energy efficiency class is: A+++** Energy test program: Cotton Eco 60/40°C. Speed: the highest speed; Other as the default. Half load for 6.0/7.0/8.0Kg machine: 3.0/3.5/4.0Kg.
- “Cotton Eco 60/40°C” is the standard washing programs to which the information in the label and the fiche relates, and they are suitable to clean normally soiled cotton laundry and that they are the most efficient programmes in terms of combined energy and water consumptions for washing that type of cotton laundry, that the actual water temperature may differ from the declared cycle temperature.
- Cotton Eco program cycle is the recommended program cycle for a normal soiled load at the rated capacity.
- The SASO energy efficiency label test program: Cotton Eco 60/40°C. Speed: the highest speed; Other as the default. Half load for 7.0/8.0Kg machine: 3.5/4.0Kg.

NOTE

- The parameters in this table are only for user's reference. The actual parameters maybe different with the parameters in above mentioned table.

Operations

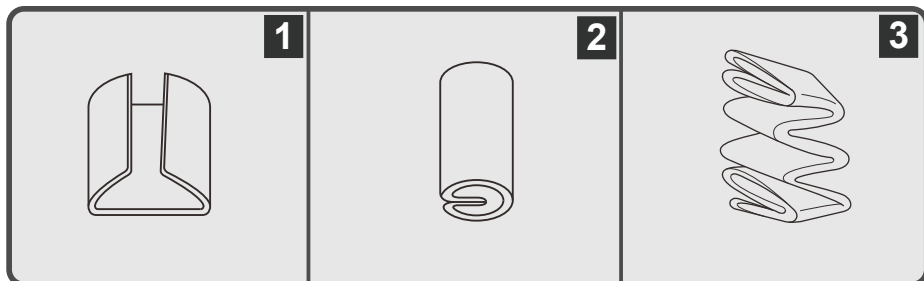
Duvet program

NOTE

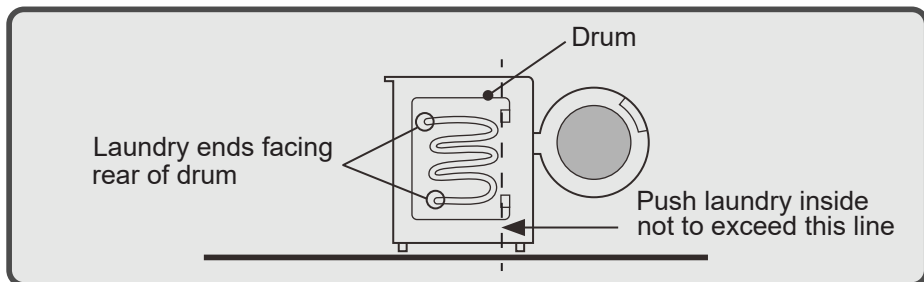
- Do not use washing net. This may cause excessive vibration when spinning.

1 Load the laundry

Fold a large items such as a duvet or blanket as follows.



Load laundry into the drum with the ends facing the rear of the drum.



2 Press the Power button to switch power on.

3 Select the Duvet program.

4 Add detergent into the detergent dispenser.

5 Press the Start /Pause button.

Maintenances

Cleaning And Care

WARNING

- Before your maintenance starts, please unplug the machine and close the tap.

1 Cleaning The Cabinet

Proper maintenance on the washing machine can extend its working life. The surface can be cleaned with diluted non-abrasive neutral detergents when necessary. If there is any water overflow, use the wet cloth to wipe it off immediately. No sharp items are allowed.



NOTE

- Formic acid and its diluted solvents or equivalent are forbidden, such as alcohol, solvents or chemical products, etc.

2 Cleaning The Drum

The rusts left inside the drum by the metal articles shall be removed immediately with chlorine-free detergents. Never use steel wool.

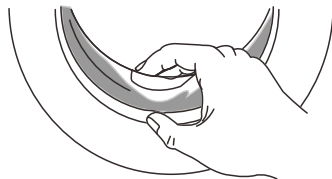
NOTE

- Formic acid and its diluted solvents or equivalent are forbidden, such as alcohol, solvents or chemical products, etc.

3 Cleaning The Door Seal And Glass

Wipe the glass and seal after each wash to remove lint and stains. If lint builds up, it can cause leaks.

Remove any coins, buttons and other objects from the seal after each wash.



CAUTION

- Do not apply too much force during door below cleaning because it may cause of door bellow take out and the water leakage problem.

Maintenances

Cleaning And Care

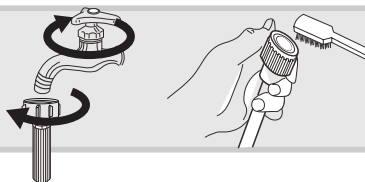
4 Cleaning The Inlet Filter

NOTE

- Inlet filter must be cleaned if there is less water.

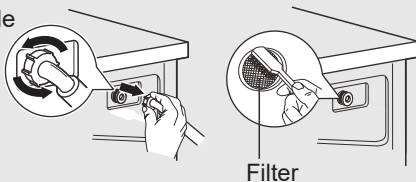
Washing the filter in the tap

1. Close the tap.
2. Remove the water supply hose from the tap.
3. Clean the joint.
4. Reconnect the water supply hose.



Washing the filter in washing machine:

1. Screw off the inlet pipe from the backside of the machine.
2. Pull out the filter with long nose pliers and reinstall it back after being washed.
3. Use the brush to clean the filter.
4. Reconnect the inlet pipe.

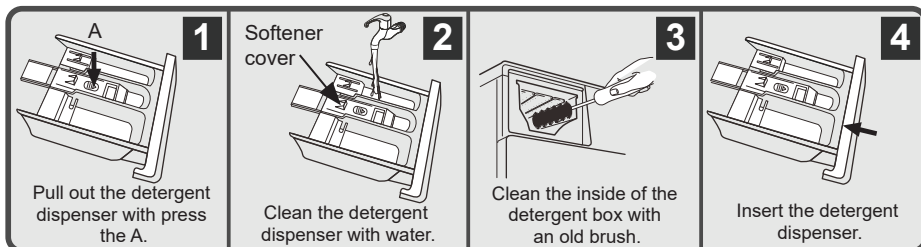


NOTE

- If the brush is not clean, you can pull out the filter washed separately.
- Reconnect, turn on the tap.

5 Cleaning The Detergent Dispenser

1. Press down the arrow location on softener cover inside the detergent dispenser.
2. Take out softener cover and wash all grooves with water.
3. Restore the softener cover and push the detergent dispenser into position.



NOTE

- Do not use alcohol, solvents or chemical products to clean the machine.

Maintenances

Cleaning And Care

6 Cleaning The Drain Filter

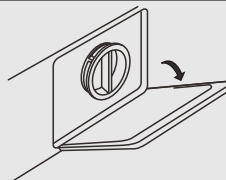
WARNING

- Be careful of the hot water!
- Allow detergent solution to cool down.
- Unplug the machine to avoid electrical shock before washing.
- Drain filter can filter the yarns and small foreign matters from the washing.
- Clean the filter periodically to ensure the normal operation of washing machine.
- Do not open the drain filter when a program is running.
- Do not operate the washing machine without the drain filter.

1

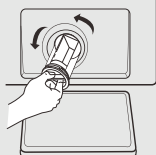
- Select the Spin program and start to drain remaining water in the drum.
- Make sure to drain the water first with Drain program, otherwise a lot of hot water may come out.

2



Open the lower cover cap

3



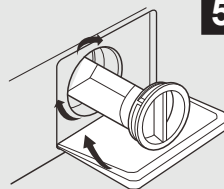
Open the filter by turning to the counter clockwise

4



Remove extraneous matter and clean the filter

5



Insert the filter and close the lower cover cap

CAUTION

- Make sure that the drain filter is installed correctly. Which should put the cover of the drain filter into the compartment, otherwise water may leak.
- When the appliance is in use and depending on the programme selected there can be hot water in the pump. Never remove the pump cover during a wash cycle, always wait until the appliance has finished the cycle, and is empty. When replacing the cover, ensure it is securely re-tightened.

Maintenances

Troubleshooting

The start of the appliance does not work or it stops during operation.
First try to find a solution to the problem, if not, contact the service centre.

Description	Reason	Solution
Washing machine cannot start up	Door is not closed properly	Restart after the door is closed Check if the clothes is stuck
Door can't be opened	Washer's safety protection design is working	Disconnect the power, restart the product
Water leakage	The connection between inlet pipe or outlet hose is not tight	Check and fasten water pipes Clean up outlet hose
Detergent residues in the box	Detergent is dampened or agglomerated	Clean and wipe the detergent box
Indicator or display does not light	Disconnect the power PC board or harness has connection problem	Check if the power is shut down and the power plug is connected correctly
Abnormal noise	The transport bolts may not have been removed. The washing machine may be installed on a sloping or unstable surface.	Check if the fixing (bolts) have been removed Check it's installed on a solid and level floor

Error Codes

Description	Reason	Solution
E30	Door is not closed properly	Restart after the door is closed Check if the clothes is stuck
E10	Water injecting problem while washing	Check if the water pressure is too low Straighten the water pipe Check if the inlet valve filter is blocked
E21	Overtime water draining	Check if the drain hose is blocked
E12	Water overflow This is caused by a faulty device sensor.	Restart the washer
EXX	Others	Please try again first, call up service line if there are still troubles

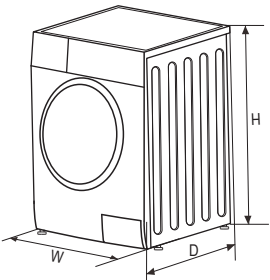
NOTE

- After the check, activate the appliance. If the problem occurs or the display shows other alarm codes again, contact the service centre.

Maintenances

Technical Specifications

Power Supply	220-240V, 50Hz 220-240V, 60Hz
MAX.Current	10A
<hr/>	
Standard Water Pressure	0.05MPa~1MPa



Model	Washing Capacity	Dimension (W*D*Hmm)	Net Weight	Rated Power
BD-70CVE	7.0kg	595*500*845	61kg	2000W
BD-80CVE	8.0kg	595*570*845	68kg	2000W

Maintenances

Specifications

Model	BD-70CVE	
Capacity		7kg
Spin Speed		1200 rpm
Energy efficiency class	①	A +++
Annual energy consumption	②	139 kWh /annual
Power consumption of off - mode		0.5W
Power consumption of Left on -mode		1.0W
Annual water consumption	③	9900L /annual
Spin- drying efficiency class	④	B
Standard washing cycle	⑤	Cotton Eco
Energy consumption of the standard 60°C at full load		0.68 kwh /cycle
Energy consumption of the standard 60°C at partial load		0.58 kwh /cycle
Energy consumption of the standard 40°C at partial load		0.54 kwh /cycle
Programme duration of standard 60°C at full load		275 min
Programme duration of standard 60°C at partial load		270 min
Programme duration of standard 40°C at partial load		270 min
Water consumption of the standard 60°C at full load		50L /cycle
Water consumption of the standard 60°C at partial load		41L /cycle
Water consumption of the standard 40°C at partial load		41L /cycle
Remaining moisture content of the standard 60°C at full load		50%
Remaining moisture content of the standard 60°C at partial load		55%
Remaining moisture content of the standard 40°C at partial load		55%
Noise level of washing		64dB (A)
Noise level of spinning		78dB (A)
Rated annual energy consumption of SASO energy efficiency label		8360 liters
Rated annual water consumption of SASO energy efficiency label		153 kWh

Maintenances

Specifications

Model	BD-80CVE	
Capacity	8kg	
Spin Speed	1200 rpm	
Energy efficiency class	①	A +++
Annual energy consumption	②	157 kWh /annual
Power consumption of off - mode	0.5W	
Power consumption of Left on -mode	1.0W	
Annual water consumption	③	11000L /annual
Spin- drying efficiency class	④	B
Standard washing cycle	⑤	Cotton Eco
Energy consumption of the standard 60°C at full load	0.77 kwh /cycle	
Energy consumption of the standard 60°C at partial load	0.65 kwh /cycle	
Energy consumption of the standard 40°C at partial load	0.62 kwh /cycle	
Programme duration of standard 60°C at full load	275 min	
Programme duration of standard 60°C at partial load	270 min	
Programme duration of standard 40°C at partial load	270 min	
Water consumption of the standard 60°C at full load	54L /cycle	
Water consumption of the standard 60°C at partial load	47L /cycle	
Water consumption of the standard 40°C at partial load	47L /cycle	
Remaining moisture content of the standard 60°C at full load	52%	
Remaining moisture content of the standard 60°C at partial load	55%	
Remaining moisture content of the standard 40°C at partial load	53%	
Noise level of washing	64dB (A)	
Noise level of spinning	78dB (A)	
Rated annual energy consumption of SASO energy efficiency label	9240 liters	
Rated annual water consumption of SASO energy efficiency label	172 kWh	

Memo

Memo

