

# HITACHI Inspire the Next **86** inch UHD Interactive Flat Panel Display



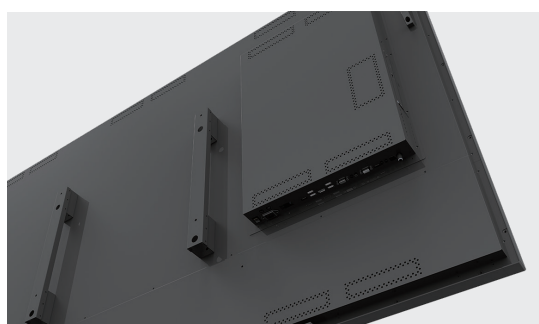
\*All images are simulated.

- **New 86 inch Ultra HD(4K) Resolution Panel**  
All-in-one solution with new screen size of 86 inch Ultra HD panel.
- **Up to 10 point of touch (simultaneous)**  
Ideal function for class rooms.  
You can write from both right and left sides.
- **Front facing stereo speakers (40W total)**  
40W stereo speakers facilitate to deliver the sound to your audience directly.
- **Front HDMI and USB inputs**  
Simply plug in your computer with HDMI and USB for touch control and you are ready to go.
- **Both Windows® and Mac OS® compatible**
- **More convenient features are available, including**  
LAN port for control, OPS slot, magnetic stylus pens.

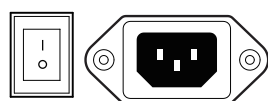
# HILU86101

**HITACHI**  
Inspire the Next

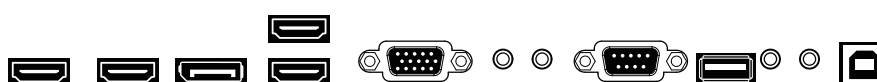
## Technical Specifications



LED PANEL	
Diagonal size	85.60 "/td>
Display Resolution (Max.)	3840 x 2160 (UHD)
Brightness (average)	410 cd/m²
Viewing Angle	H: 178° / V: 178°
Contrast ratio	1200:1 (Typ.)
Supported Colors	1.07B colors (10bit)
Response Time	8 ms (Gray to Gray)
Display Frame Rate	60Hz (Actual)
Installation	Landscape Orientation
TOUCH	
Detect area	1895.04(H) x 1065.96(V) mm / 74.6"(H) x 41.96"(V)
Detection method	Infrared blocking Detection Method
Touch tool	Hand or other solid object
Accuracy	±2mm
Response time	< 12ms
Available Touch Point	10 Points
Operating Systems	Windows7, 8, 10/ Mac OS 10.10-10.12
PC connector	USB
SIGNAL CONNECTIVITY	
Video	HDMI x 4 (Rear x3, Only for inside OPS x1), HDMI Out x 1, Display Port x1, VGA x1
Audio	RCA Speaker Out(R/L), Stereo Mini Lineout, Stereo Mini Input
Communication Port:	LAN(RJ45) or RS-232C (D-sub 9-pin)
Front Input	HDMI x1(as specified in "Video Input"), USB-B(only for touch control as specified in "Communication Port")x1, USB-A x1
MECHANICAL	
Dimensions Landscape	1,971 x 1,197 x 109mm
Weight (Mass)	92 kg (202.8 lbs)
VESA mount	600 x 400 (mm), M8 Screw
Front Glass	Tempered Glass 4.0t (Anti-glare Type)
ELECTRICAL	
Power Requirement	100 - 240V AC, 50/60 Hz
Power Consumption	Max. 333W
Power Consumption (Standby)	< 0.5W
Speaker Output	20W + 20W Stereo (8-ohms)
ENVIRONMENTAL	
Operating Temperature	0 ~ 40 °C (32 ~ 104 °F)
Storage Temperature	- 20 ~ 60 °C (-4 ~ 140 °F)
Operating Humidity	20% to 80% RH (no condensation)
OSD FUNCTIONS	
OSD Language Function	English / Japanese
OSD Key Lock Function	Support
ACCESSORIES	
Magnetic stylus pen x 2 , Remote controller, HDMI Cable, USB Cable, Power Cable, CD(User Manual, Installation Manual, Touch driver)	
CERTIFICATIONS	
QAS, RCM, CB, RoHS, FCC, NRTL	



POWER ON OFF  
AC IN  
100-240 V~, 50/60Hz  
A&T 071-002002



HDMI OUT  
HDMI 3 IN  
DISPLAY PORT  
HDMI 2 IN  
HDMI 1 IN  
VGA IN  
VGA AUDIO IN  
AUDIO LINE OUT  
RS232C  
USB FOR UPDATE  
L(8Ω) R(8Ω) SPEAKER OUT  
USB FOR TOUCH

- Design and specifications are subject to change without notice.
- Microsoft, Encarta, MSN, and Windows are either registered trademarks or trademarks of Microsoft Corporation in the United States and/or other countries.
- Mac OS® is registered trademarks of Apple Inc.
- HDMI, High-Definition Multimedia Interface, and the HDMI logo are trademarks or registered trademarks of HDMI Licensing, LLC in the United States and/or other countries.
- All other trademarks and registered trademarks are the property of their respective owners in the United States and/or other countries.